

**DOBBS FERRY SCHOOL DISTRICT
2005-2011 REGENTS EXAM PERFORMANCE
STUDENTS ATTAINING MASTERY
BY DISTRICT, HIGH SCHOOL & MIDDLE SCHOOL**

**DOBBS FERRY SCHOOL DISTRICT
2005-2011 REGENTS EXAM PERFORMANCE
STUDENTS ATTAINING MASTERY**

Total Number of Students Taking Test

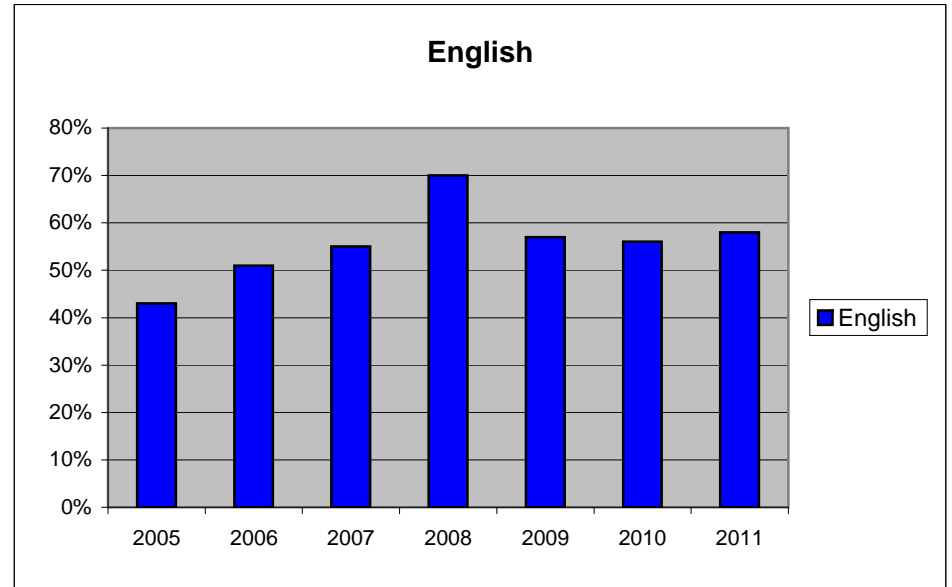
Year	English	Integ. Alg.	Geometry	Alg II/Trig	Math B	Global	US Hist.	Biology	Earth Sci.	Chemistry	Physics	French	Italian	Spanish
2005	115				87	99	108	77	100	89	45	14	23	33
2006	102				57	89	100	109	75	57	37	16	15	40
2007	102				77	136	104	95	106	77	30	17	15	70
2008	126	58			86	126	126	111	118	89	46	25	18	51
2009	122	156	97		64	119	129	122	109	77	39	18	15	42
2010	110	131	124	85	10	134	105	125	99	107	32	15	24	50
2011	113	129	115	93		107	116	109	104	100	56	18	24	43

Percentage of Students Attaining Mastery - Scoring 85%-100%

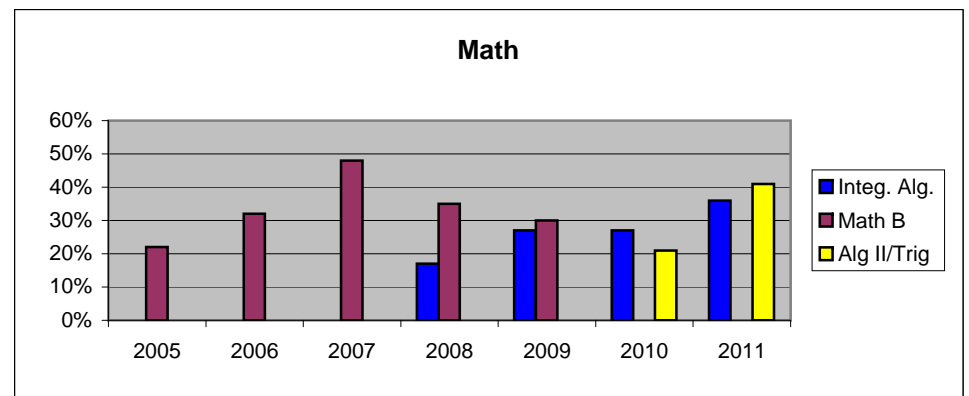
Year	English	Integ. Alg.	Geometry	Alg II/Trig	Math B	Global	US Hist.	Biology	Earth Sci.	Chemistry	Physics	French	Italian	Spanish
2005	43%				22%	57%	74%	55%	64%	34%	71%	79%	65%	64%
2006	51%				32%	60%	61%	54%	40%	51%	78%	81%	87%	73%
2007	55%				48%	44%	61%	64%	59%	52%	87%	88%	60%	84%
2008	70%	17%			35%	46%	71%	57%	58%	22%	83%	88%	89%	65%
2009	57%	27%	40%		30%	48%	60%	57%	53%	39%	67%	61%	67%	76%
2010	56%	27%	35%	21%		52%	67%	70%	44%	20%	63%	73%	96%	88%
2011	58%	36%	37%	41%		51%	72%	73%	60%	45%	46%	83%	71%	79%

**DOBBS FERRY SCHOOL DISTRICT
2005-2011 REGENTS EXAM PERFORMANCE
STUDENTS ATTAINING MASTERY**

Year	English
2005	43%
2006	51%
2007	55%
2008	70%
2009	57%
2010	56%
2011	58%

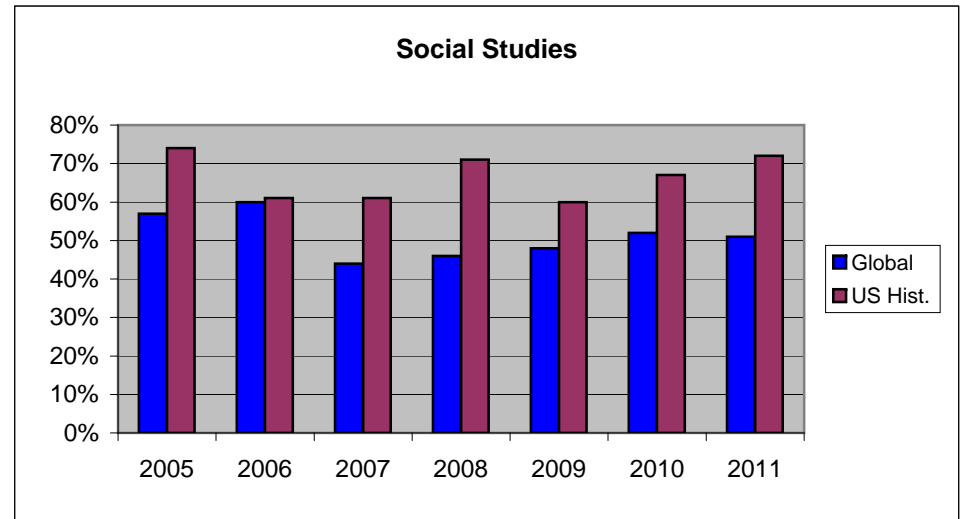


Year	Integ. Alg.	Math B	Alg II/Trig
2005		22%	
2006		32%	
2007		48%	
2008	17%	35%	
2009	27%	30%	
2010	27%		21%
2011	36%		41%

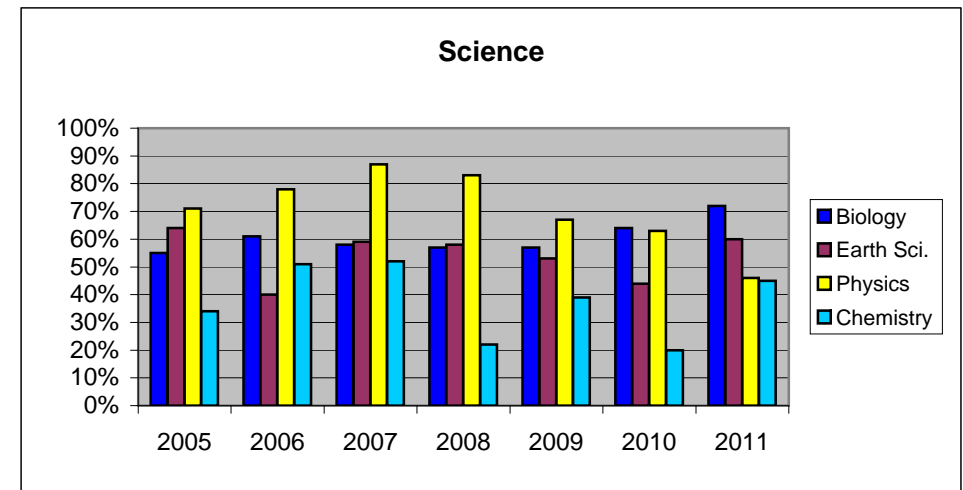


**DOBBS FERRY SCHOOL DISTRICT
2005-2011 REGENTS EXAM PERFORMANCE
STUDENTS ATTAINING MASTERY**

Year	Global	US Hist.
2005	57%	74%
2006	60%	61%
2007	44%	61%
2008	46%	71%
2009	48%	60%
2010	52%	67%
2011	51%	72%

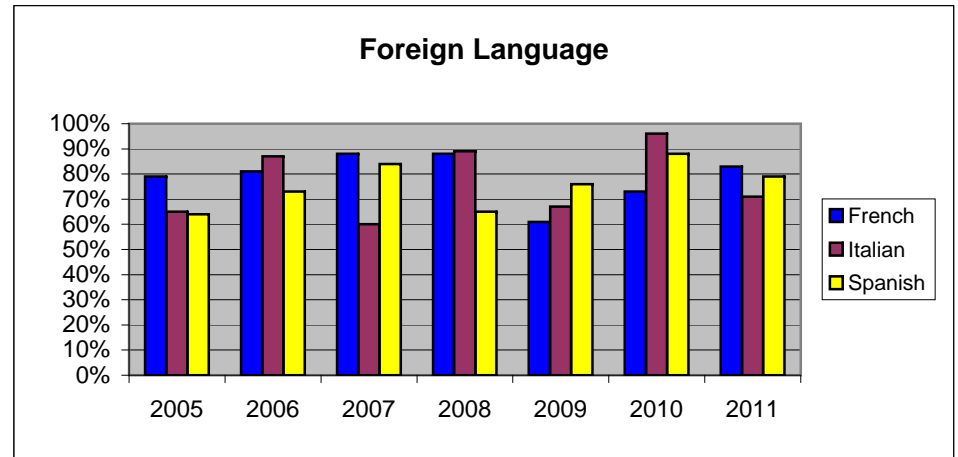


Year	Biology	Earth Sci.	Physics	Chemistry
2005	55%	64%	71%	34%
2006	61%	40%	78%	51%
2007	58%	59%	87%	52%
2008	57%	58%	83%	22%
2009	57%	53%	67%	39%
2010	64%	44%	63%	20%
2011	72%	60%	46%	45%



**DOBBS FERRY SCHOOL DISTRICT
2005-2011 REGENTS EXAM PERFORMANCE
STUDENTS ATTAINING MASTERY**

Year	French	Italian	Spanish
2005	79%	65%	64%
2006	81%	87%	73%
2007	88%	60%	84%
2008	88%	89%	65%
2009	61%	67%	76%
2010	73%	96%	88%
2011	83%	71%	79%



**DOBBS FERRY HIGH SCHOOL
2005-2011 REGENTS EXAM PERFORMANCE
STUDENTS ATTAINING MASTERY**

**DOBBS FERRY HIGH SCHOOL
2005-2011 REGENTS EXAM PERFORMANCE
STUDENTS ATTAINING MASTERY**

Total Number of High School Students Taking Test

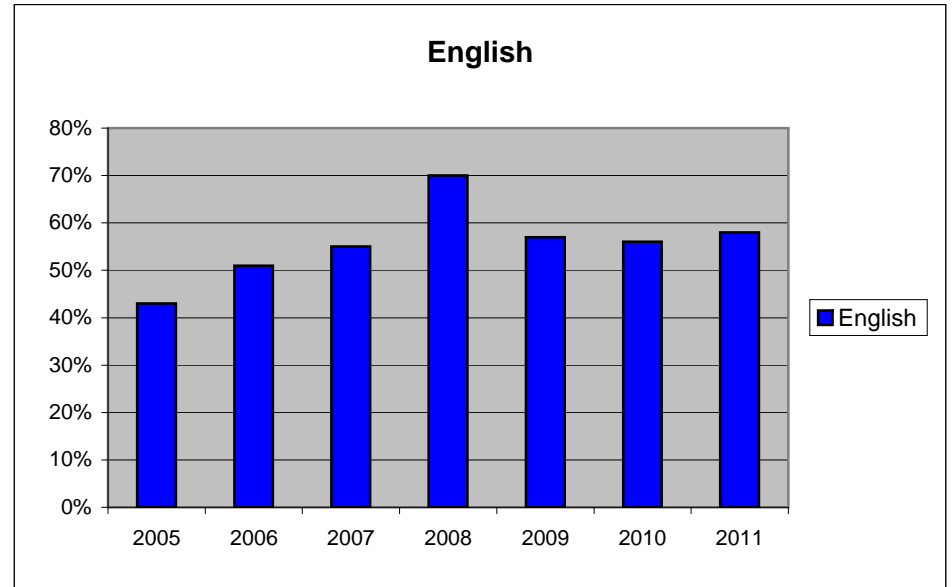
Year	English	Integ. Alg.	Geometry	Alg II/Trig	Math B	Global	US Hist.	Biology	Earth Sci.	Chemistry	Physics	French	Italian	Spanish
2005	115				87	99	108	77	61	89	45	14	23	33
2006	102				57	89	100	109	75	57	37	16	15	40
2007	102				77	136	104	95	80	77	30	17	15	70
2008	125	58			86	126	125	111	76	89	46	25	18	51
2009	121	99	97		64	118	129	122	69	77	39	18	15	42
2010	109	60	124	84	10	132	105	124	52	107	32	15	24	50
2011	113	57	115	92		107	115	108	50	100	56	18	24	43

Percentage of High School Students Attaining Mastery - Scoring 85%-100%

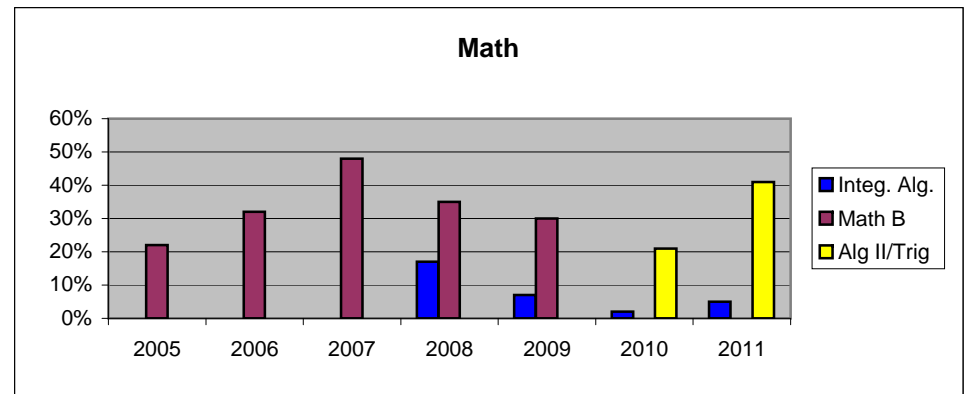
Year	English	Integ. Alg.	Geometry	Alg II/Trig	Math B	Global	US Hist.	Biology	Earth Sci.	Chemistry	Physics	French	Italian	Spanish
2005	43%				22%	57%	74%	55%	46%	34%	71%	79%	65%	64%
2006	51%				32%	60%	61%	61%	40%	51%	78%	81%	87%	73%
2007	55%				48%	44%	61%	58%	46%	52%	87%	88%	60%	84%
2008	70%	17%			35%	46%	72%	57%	38%	22%	83%	88%	89%	65%
2009	57%	7%	40%		30%	48%	60%	57%	30%	39%	67%	61%	67%	76%
2010	56%	2%	35%	21%		53%	67%	65%	17%	20%	63%	73%	96%	88%
2011	58%	5%	37%	41%		51%	72%	73%	36%	45%	46%	83%	71%	79%

**DOBBS FERRY HIGH SCHOOL
2005-2011 REGENTS EXAM PERFORMANCE
STUDENTS ATTAINING MASTERY**

Year	English
2005	43%
2006	51%
2007	55%
2008	70%
2009	57%
2010	56%
2011	58%

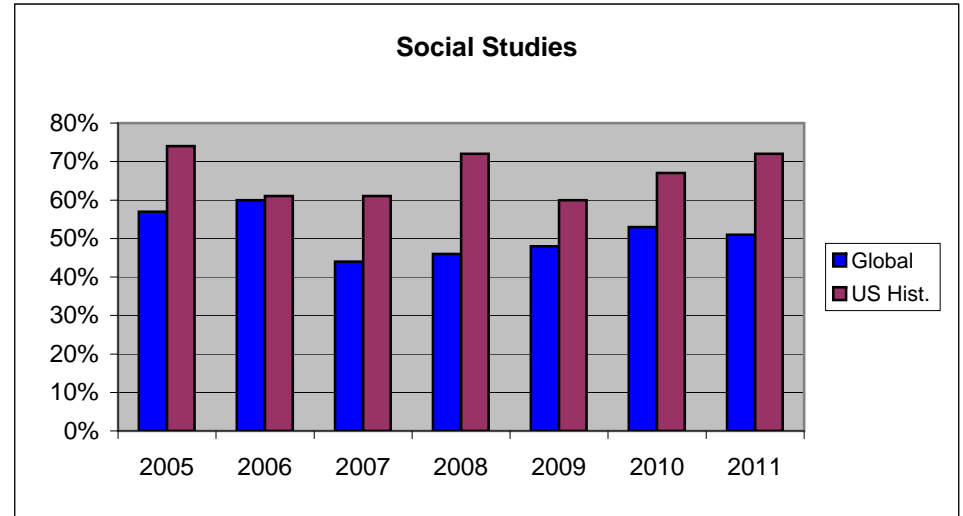


Year	Integ. Alg.	Math B	Alg II/Trig
2005		22%	
2006		32%	
2007		48%	
2008	17%	35%	
2009	7%	30%	
2010	2%		21%
2011	5%		41%

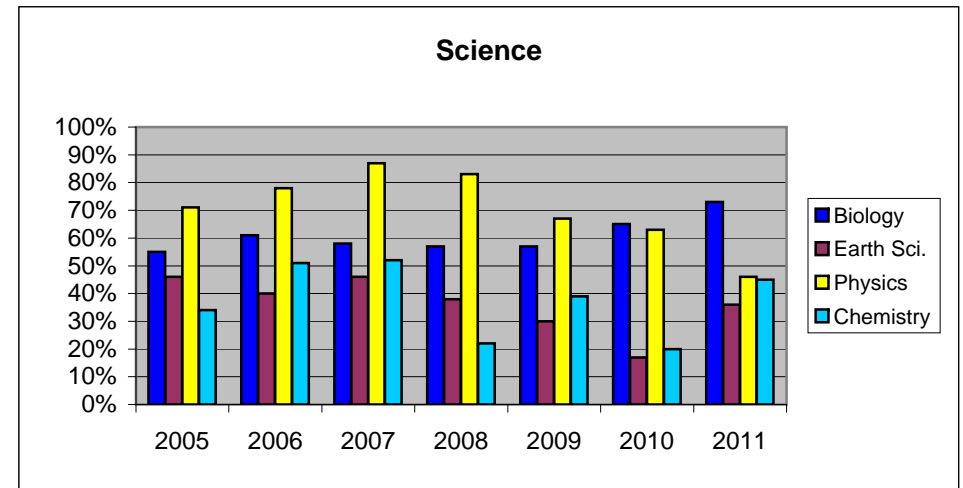


**DOBBS FERRY HIGH SCHOOL
2005-2011 REGENTS EXAM PERFORMANCE
STUDENTS ATTAINING MASTERY**

Year	Global	US Hist.
2005	57%	74%
2006	60%	61%
2007	44%	61%
2008	46%	72%
2009	48%	60%
2010	53%	67%
2011	51%	72%

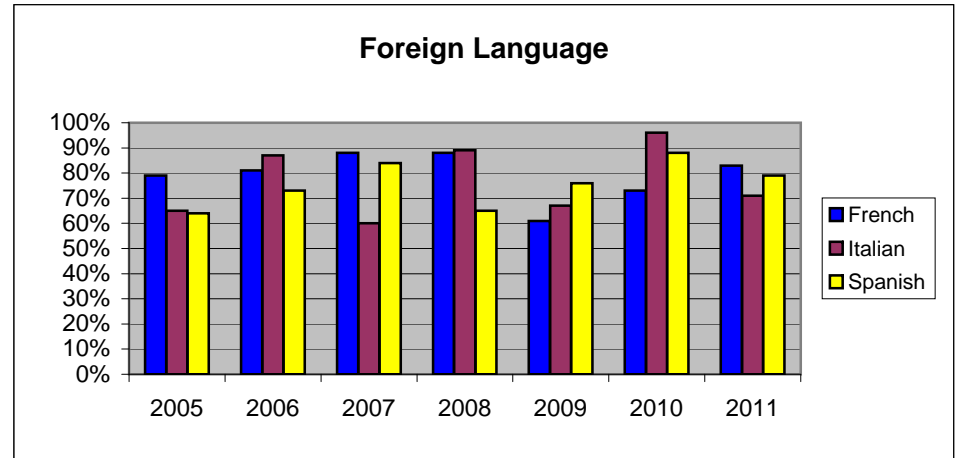


Year	Biology	Earth Sci.	Physics	Chemistry
2005	55%	46%	71%	34%
2006	61%	40%	78%	51%
2007	58%	46%	87%	52%
2008	57%	38%	83%	22%
2009	57%	30%	67%	39%
2010	65%	17%	63%	20%
2011	73%	36%	46%	45%



**DOBBS FERRY HIGH SCHOOL
2005-2011 REGENTS EXAM PERFORMANCE
STUDENTS ATTAINING MASTERY**

Year	French	Italian	Spanish
2005	79%	65%	64%
2006	81%	87%	73%
2007	88%	60%	84%
2008	88%	89%	65%
2009	61%	67%	76%
2010	73%	96%	88%
2011	83%	71%	79%

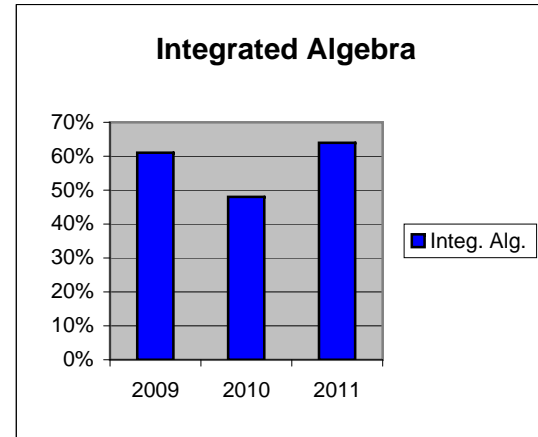


**DOBBS FERRY MIDDLE SCHOOL
2005-2011 REGENTS EXAM PERFORMANCE
STUDENTS ATTAINING MASTERY**

**DOBBS FERRY MIDDLE SCHOOL
2005-2011 REGENTS EXAM PERFORMANCE
STUDENTS ATTAINING MASTERY**

Total Number of Students Taking Test

Year	Integ. Alg.	Earth Sci.
2005		39
2006		
2007		26
2008		42
2009	57	40
2010	71	47
2011	69	54



Percentage of Students Attaining Mastery - Scoring 85%-100%

Year	Integ. Alg.	Earth Sci.
2005		92%
2006		
2007		100%
2008		95%
2009	61%	93%
2010	48%	74%
2011	64%	81%

